

Heat Shields



For use with
Stovax, Yeoman & Kensal Freestanding Stove Ranges

Instructions for Installation

For use in GB & IE (Great Britain & Republic of Ireland).

IMPORTANT

These instructions are designed to complement the appliance installation and user guide in order to install a Stovax, Yeoman or Kensal Freestanding Stove. This supplement should be read in conjunction with the supplied manuals to ensure all the correct installation procedures are followed in order to safely operate the appliance with a Heat Shield.

All kits should only be used in conjunction with Twin Wall Flue Pipe and the minimum height connection between the appliance and flue pipe.

DO NOT MODIFY THE HEAT SHIELDS.

Contents

Covering the following models:

Model	Riva Vision Small	Riva Vision/Vogue Midi	Stockton					
			3	4	5/ 5 ML	5W	6/6 HL	7
Heat Shield Kit	RVN-SMHSK	RVN-MIDHSK	3HSK	ST4HSK	5HSK	ST5WIDHSK	ST6HSK	ST7HSK

Model	View					
	3	5	5T	5 Midline	5T Midline	5W
Heat Shield Kit	VW-3HSK	VW-5HSK	VW-5THSK	VW-5MIDHSK	VW-5TMIDHSK	VW-5WIDHSK

Model	Yeoman CL				Yeoman		Kensal	
	CL3	CL5	CL5 ML/CL5 HL	CL5W	Exe	Exmoor	20	33
Heat Shield Kit	YM-CL3-HSK	YM-CL5-HSK	YM-CL5-HSK	VW-5WIDHSK	YM-EXE-HSK	YM-EXM-HSK	3HSK	5HSK

Installation Instructions	3
Packing List - All Models.....	3
Tools Required.....	3
Options and Clearances - All Models.....	4
Drilling Template - Kensal, Stockton, View & Yeoman.....	5
Drilling Template - Vision & Vogue.....	6
Stockton 5W, View 5W, Yeoman CL5W.....	7
Installation - Heat Shield & Outside Air Kits.....	8
Installation - Rear Heat Shield.....	9
Installation - Side Heat Shields.....	10
Installation - Flue pipe Installation.....	10
Additional Guidance On Clearances	11

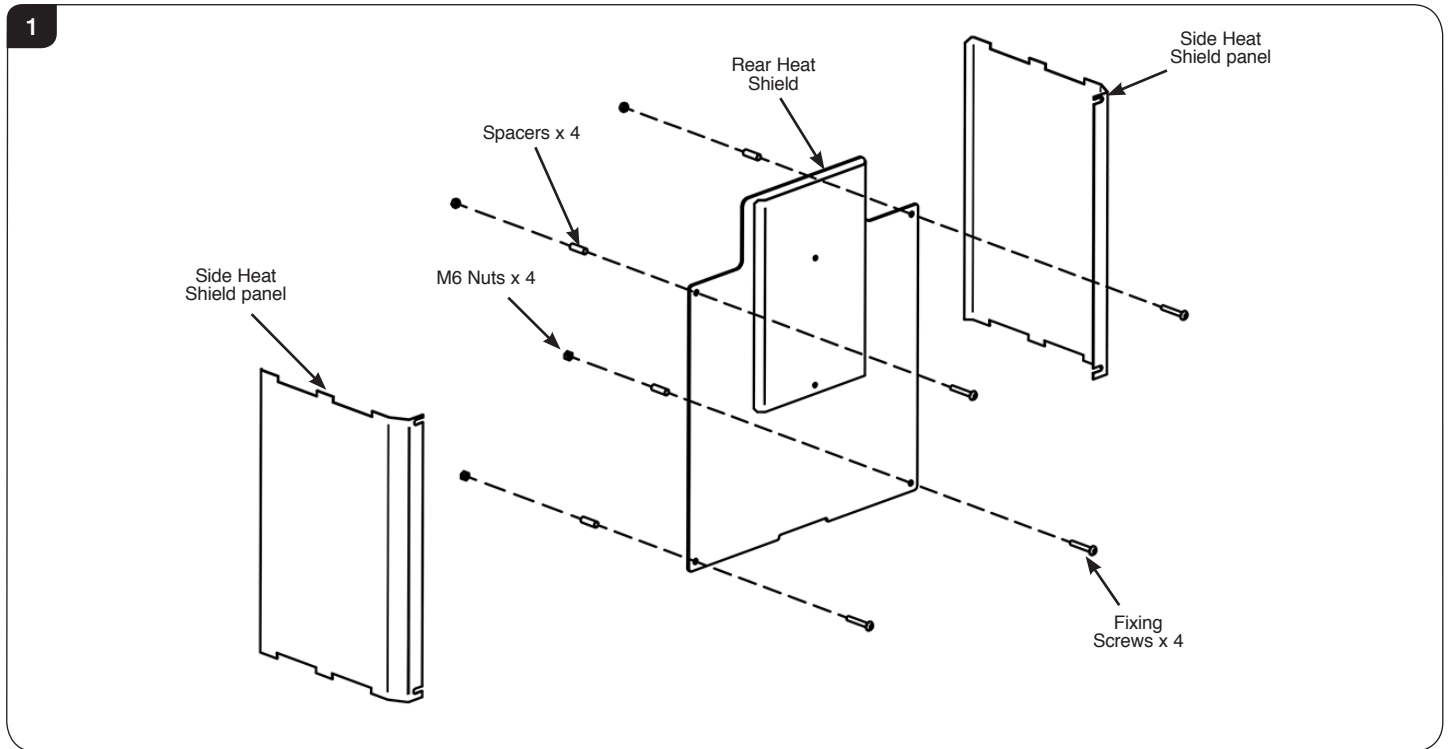


Top flue versions only. Not suitable for Boiler, Inset or Canopied Stoves.

Note: The View 5T & 5 Midline have extended sides - however the fitting method for the kit is identical to the versions for other models.

Installation Instructions

1. Packing List



- 1 x Instructions
- 1 x Rear Heat Shield
- 2 x Side Heat Shields
- 4 x Fixing screws
- 4 x Spacers
- 4 X M6 Nuts



All kits should only be used in conjunction with Twin Wall Flue Pipe and minimum height connection between the appliance and flue pipe.

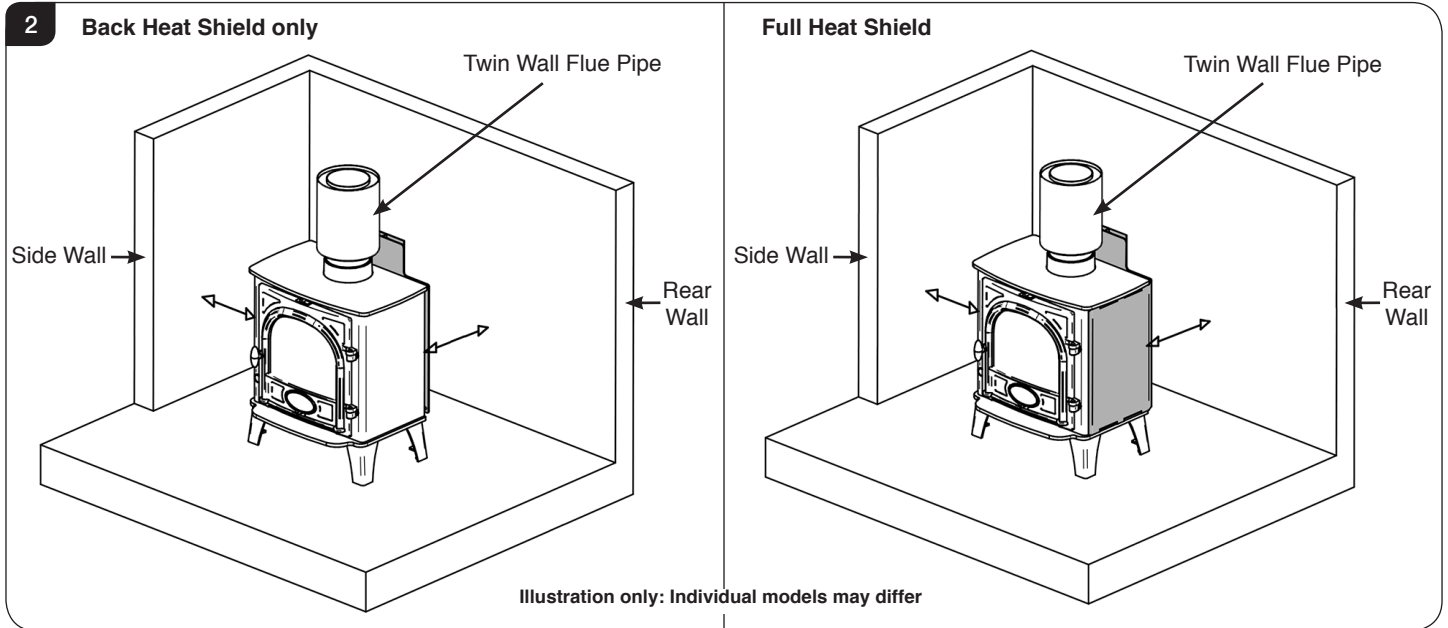
Tools Required

- Ø 5mm for securing using tapping set
- Ø 7mm for securing using optional nuts
- M6 Tap
- 4mm Hex Key
- Ø 10mm Drill (for use with Vision Outside Air kit only)

Note: Tapping sets/Drill not required for Stockton 5W, View 5W, or CL5W

Installation Instructions

2. Options & Clearances



Back Heat Shield only

Fitting this heat shield allows a reduction in the clearance to combustible material dimensions to the values as listed:-

Model	Riva Vision Small	Riva Vision/Vogue Midi	Stockton					
			3	4	5/ 5 ML	5W	6/6 HL	7
Side	350	400	450	450	400	400	425	425
Back	100	100	150	150	200	300	250	250

Model	View			Yeoman CL			Yeoman		Kensal	
	3	5/ 5 ML/ 5T/ 5T ML	5W	CL3	CL5/ CL5 ML/ CL5 HL	CL5W	Exe	Exmoor	20	33
Side	500	450	400	500	450	400	550	400	450	400
Back	200	200	300	200	200	300	250	100	150	200

Full Heat Shield

Fitting this heat shield allows a reduction in the clearance to combustible material dimensions to the values as listed:-

Model	Riva Vision Small	Riva Vision/Vogue Midi	Stockton					
			3	4	5/ 5 ML	5W	6/6 HL	7
Side	300	350	350	350	250	300	300	300
Back	100	100	150	150	150	300	200	200

Model	View			Yeoman CL			Yeoman		Kensal	
	View 3	5/ 5 ML/ 5T/ 5T ML	5W	CL3	CL5/ CL5 ML/ CL5 HL	CL5W	Exe	Exmoor	20	33
Side	400	300	300	400	300	300	450	300	350	250
Back	200	200	300	200	200	300	250	100	150	150

These Dimensions are measured from the sides and back of the appliance.

Ensure the correct clearance to combustible materials is maintained from any connecting flue pipes, as detailed in Building Regulations Approved Document J.

Installation Instructions

3A. Drilling Template - Kensal, Stockton, View and Yeoman appliances

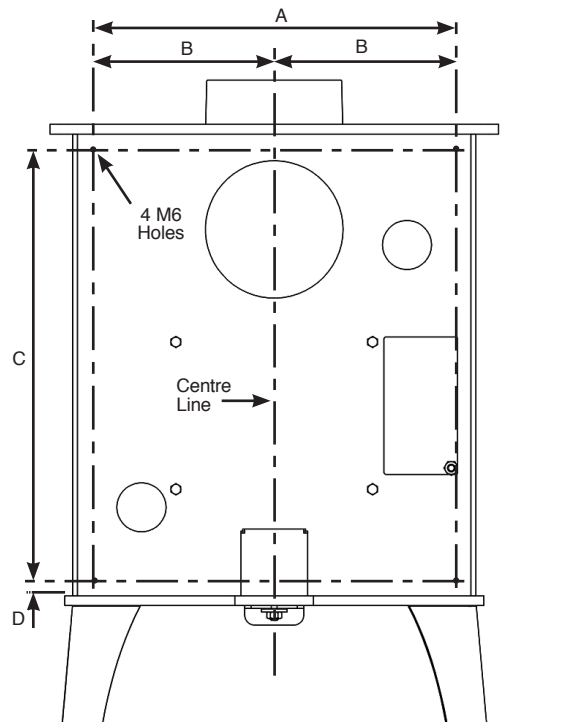
Note: Excludes Stockton 5W, View 5W, and CL5W models- these appliances do not require drilling, see Section 3C.

- 3.1 Mark out and drill 4 x M6 tap holes on the back of the appliance in the positions shown in Diagrams 4 & 5 using the dimensions below: This is the recommended method to attach the Heat Shield.

If it is not possible to use a drill and tap set then the fixing nuts provided can be used. Drill 4 x Ø 7mm holes in the locations shown below.

3 Stockton/ View/ CL/ Yeoman/ Kensal

Illustration only: Individual models may differ



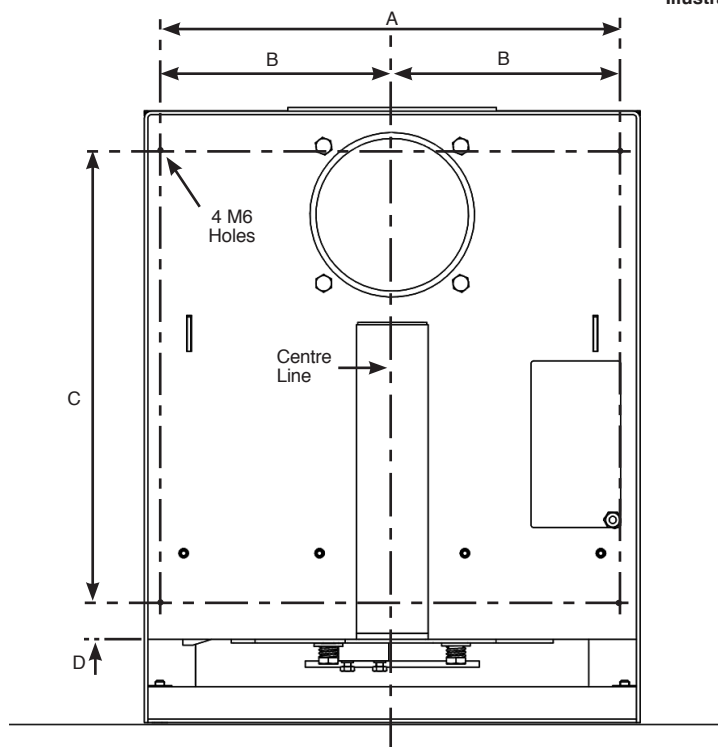
Model	A	B	C	D
Stockton 3	326	163	371	12
Stockton 4	326	163	416	12
Stockton 5/ Stockton 5 Midline	400	200	381	12
Stockton 6/ Stockton 6 Highline	376	188	446	12
Stockton 7	456	228	416	12
View 3	326	163	371	12
View 5/ View 5 Midline	400	200	381	12
View 5T/5T Midline	400	200	493	12
Yeoman CL3	326	163	371	12
Yeoman CL5/ CL5 Midline/ CL5 Highline	400	200	382	12
Yeoman Exe	495	248	394	12
Yeoman Exmoor	356	178	391	12
Kensal 20	326	163	371	12
Kensal 33	400	200	381	12

Installation Instructions

3B. Drilling Template - Vision & Vogue appliances

4 Riva Vision/ Vogue

Illustration only: Individual models may differ

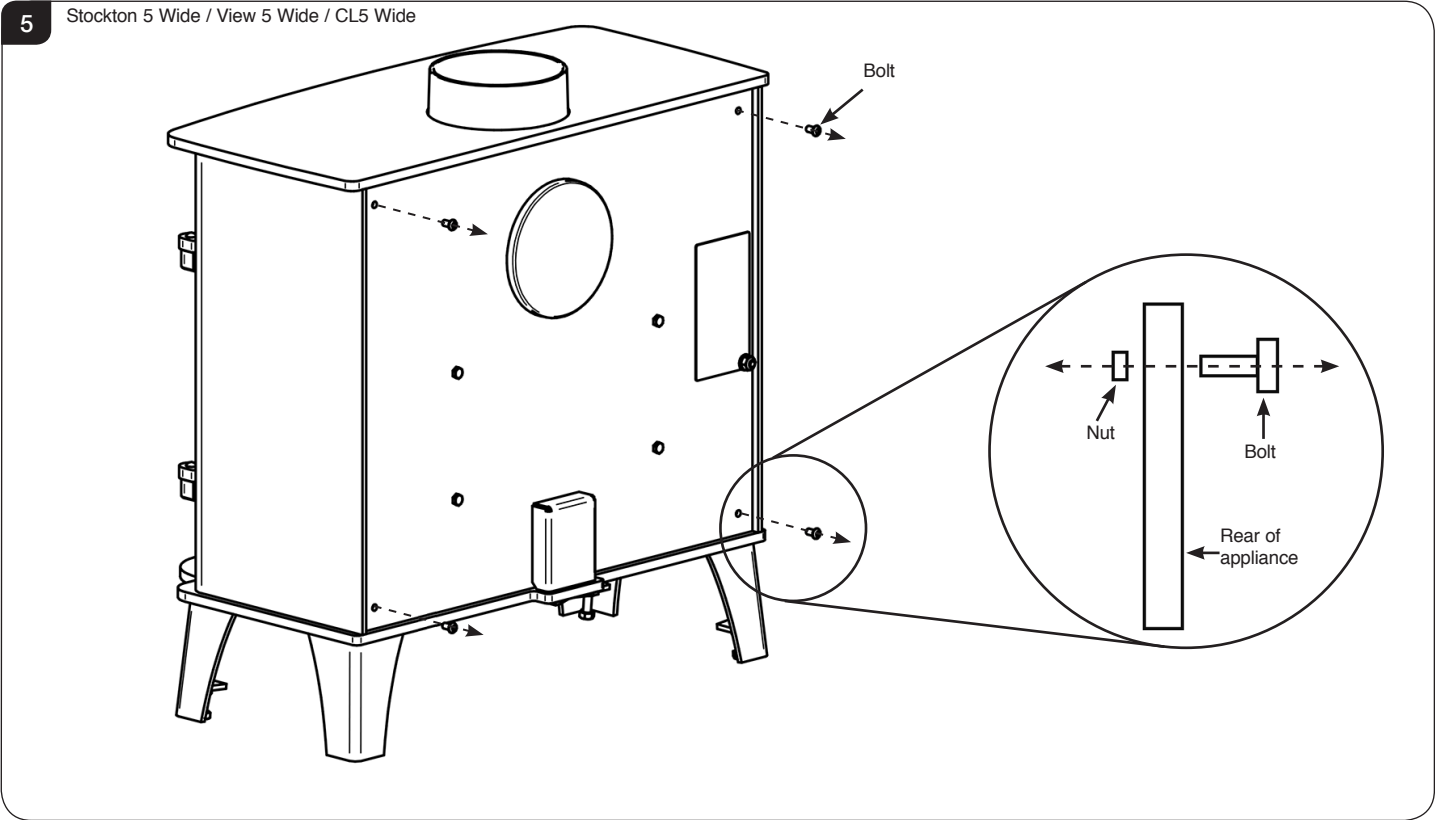


Model	A	B	C	D
Riva Vision/ Vogue Small	340	170	380	18
Riva Vision Midi/Vogue Midi	386	193	381	32

Installation Instructions

3C. Stockton 5W, View 5W, & CL5W appliances - No drilling required

The 5 Wide models have blanking bolts that are required to be removed before refitting the heat shield. These are held in place by nuts on the inside rear of the firebox, see Diagram 5. The blanking nuts will need to be reused with the bolts supplied with the heat shield kit.



Installation Instructions

4. Installation

All Models

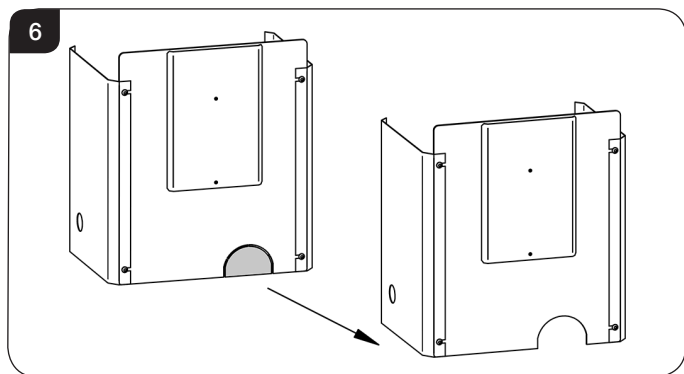
4.1 Remove the Dataplate and washer from the rear of the appliance.

Note: The Dataplate must be fitted to the bottom right of the rear Heat Shield during installation.

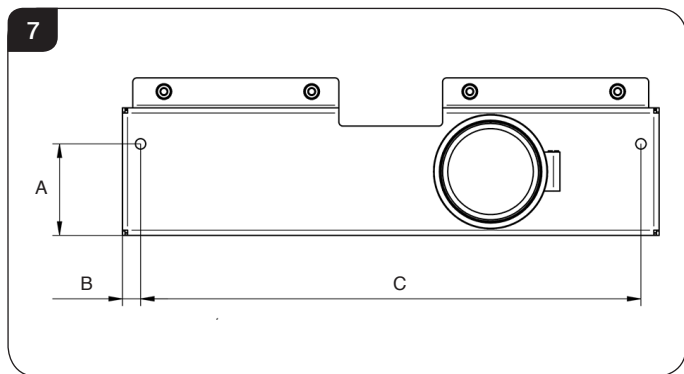
Heat Shields fitted with an Outside Air Kit - Vision Small, Vision Midi & Vogue Midi only

If the Heat Shield is to be fitted with an Outside Air Kit, the following steps will need to be carried out prior to installing the Heat Shield kit.

4.2 Knock out the pre-cut hole in the rear Heat Shield, see Diagram 6.

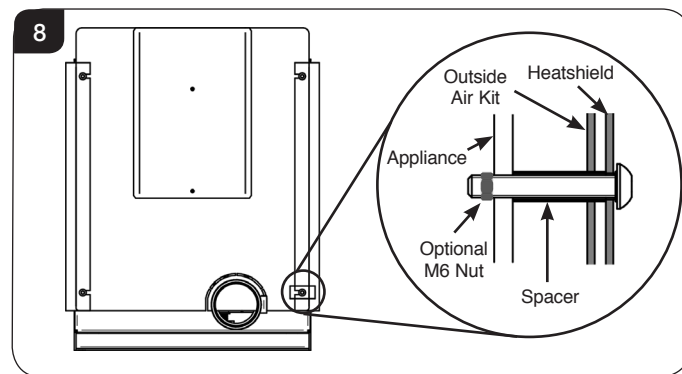


4.3 Drill 2 10mm Ø holes in the Outside Air Kit in the positions shown in Diagram 7 to allow for the spacer tubes.



	A	B	C
Riva Vision/ Vogue Small	46.5	14	341
Riva Vision Midi/ Vogue Midi	70.3	14	386

4.4 When fitting the Rear Heat Shield ensure that the spacer tubes pass through the Outside Air kit, see Diagram 8.

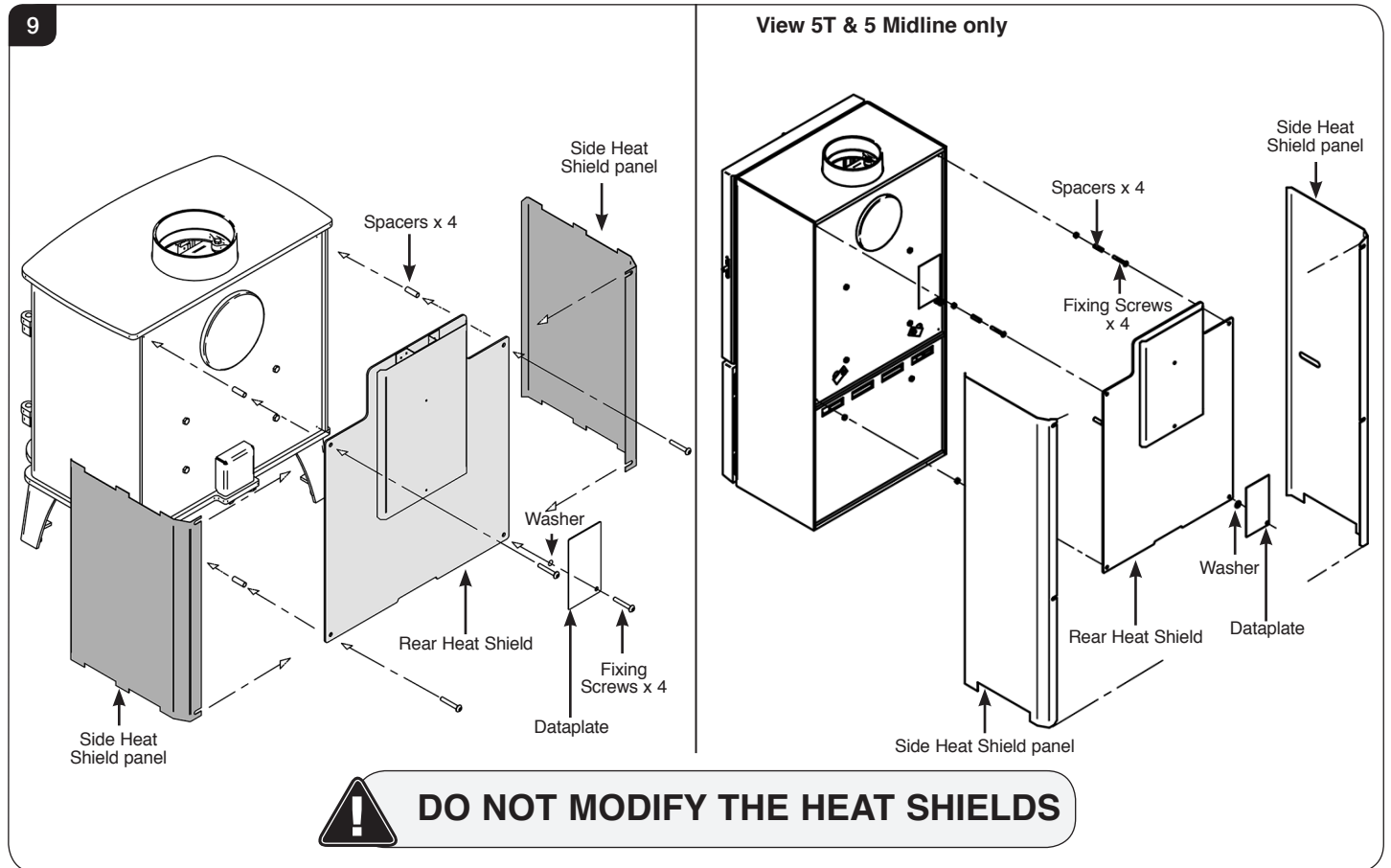


Installation Instructions

4a. Rear Heat Shield

4a.1 Align the rear Heat Shield with the back of the appliance. Loosely secure with the top 2 and bottom left fixing screws and spacers, see Diagram 9.

NOTE: For the Stockton 5W, View 5W, and CL5W the nuts previously removed from the back of the appliance are also reused.



4a.2 Loosely secure the Dataplate and washer to the bottom right of the rear Heat Shield using the remaining screw and spacer, see Diagram 9. Ensure that the washer is located between the Dataplate and Heat Shield.

4a.3 If side Heat Shields are to be fitted do not tighten the screws at this point, see Section 4b.

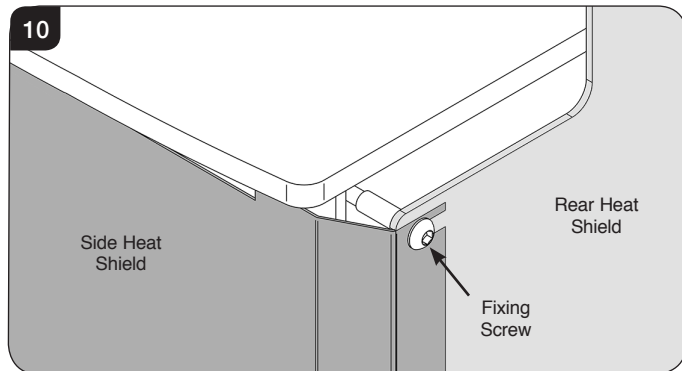
4a.4 If not fitting side Heat Shields tighten the fixing screws to finish the installation.
Do not over tighten the fixing screws.

Installation Instructions

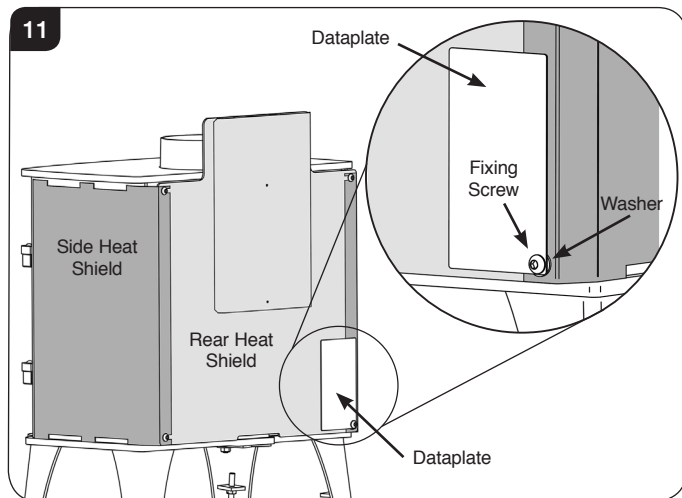
4b. Side Heat Shields

Take care not to scratch the appliance when locating the Heat Shields.

- 4b.1 Carefully align the fixing slots with the screws securing the rear Heat Shield to the back of the appliance.
The top and the bottom left fixing slots must locate behind the rear Heat Shield, see Diagram 10.



The bottom right fixing slot must locate between the rear Heat Shield and the Dataplate washer, see Diagram 11.



The front of the shield rests on the side of the appliance.

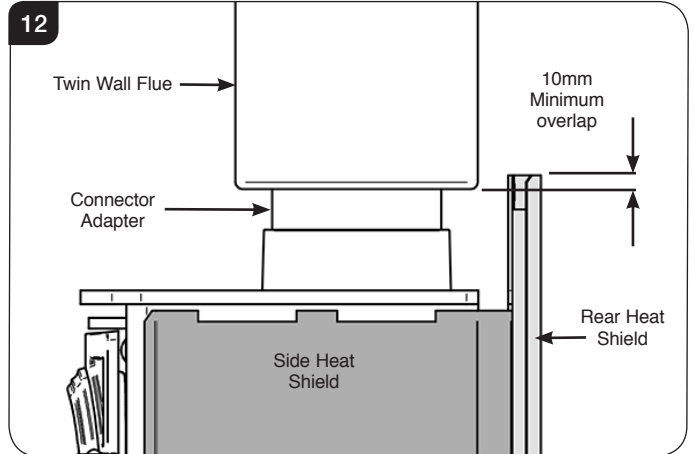
- 4b.2 Tighten the fixing screws to secure the Heat Shields.
Do not over tighten the fixing screws.
- 4b.3 Repeat on the other side.

5. Flue Pipe Installation - All Models



IMPORTANT

When installing the flue pipe the lower edge of the Twin Wall flue must overlap the rear Heat Shield by a minimum of 10mm, see Diagram 12.

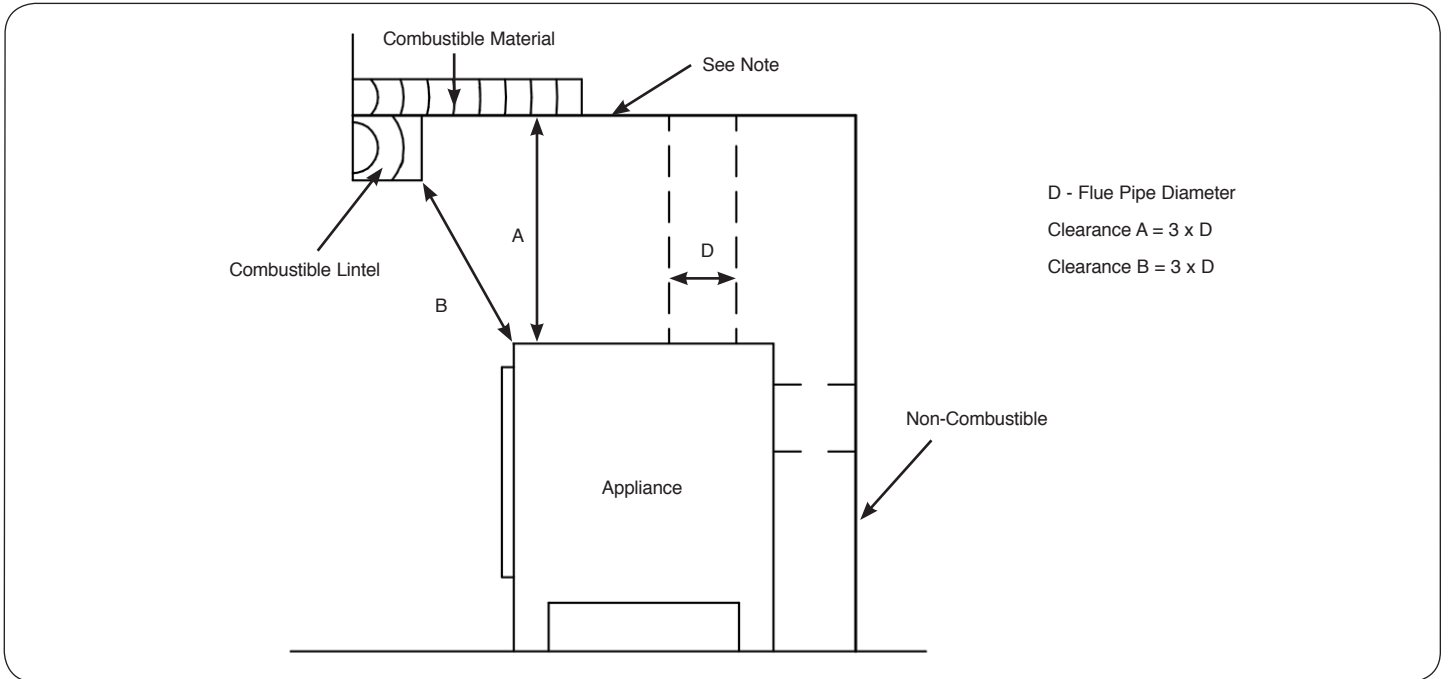


Ensure the correct clearance to combustable materials is maintained from any connecting flue pipes, as detailed in Building Regulations Approved Document J.

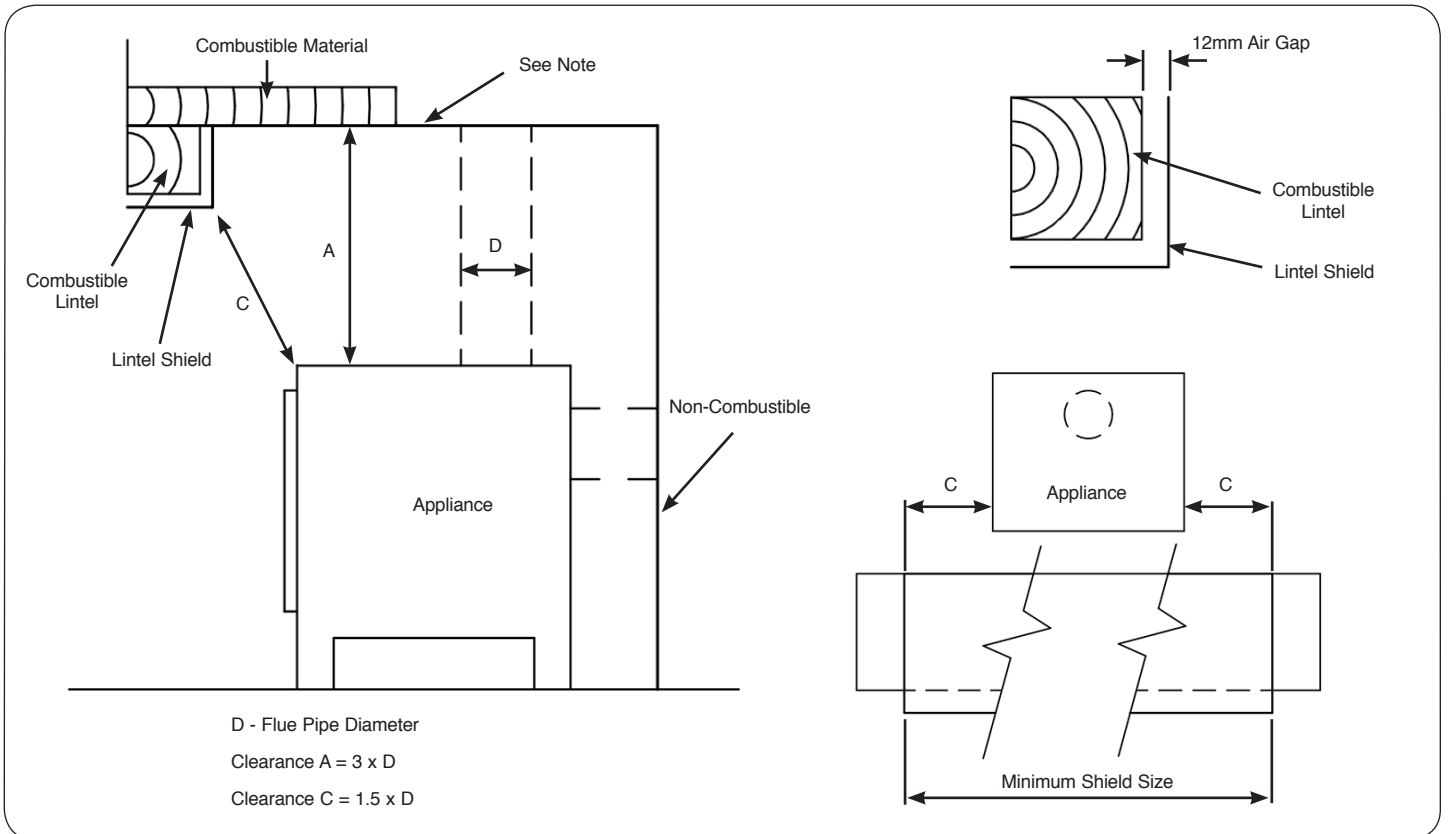
Additional Guidance on Clearances

To be used if there are no specific dimensions given in instructions

No Lintel Shield



Lintel Shield



Note:

- A register plate above the appliance must be made from 1.5mm thick galvanised steel.
- A Closure Plate above the appliance must be made from non-combustible material.
- All Clearances from combustible materials to flue pipes must be as stated in Building Regulations Approved Document J.

Stovax Ltd, Falcon Road, Sowton Industrial Estate, Exeter, Devon, England EX2 7LF
Tel: (01392) 474011 Fax: (01392) 219932 E-mail: info@stovax.com www.stovax.com

E & O E